



SMARTSCAPE
A Training Program for
Landscape Professionals™

Smartscape for Homeowners Associations

Class #1 Overview, Design & Desert-Adapted Plants




**TUCSON
WATER**
Partnership with the City of Tucson



UNIVERSITY OF ARIZONA
Cooperative Extension

1




SMARTSCAPE

Learning Objectives

After participating in the HOA Program Class #1, participants will be able to:

1. Explain the HOA Landscape Transformation Program
2. Describe what it takes to succeed in the program
3. State what landscape professionals who have earned their Smartscape Certificate of Completion should both know and practice
4. Summarize the design process
5. List three common design tasks that require additional licenses or certifications
6. Describe a sustainable urban desert landscape
7. Discuss the advantages of native/desert-adapted over introduced plants
8. Recognize and name commonly used low water-use plants suitable for our urban desert landscape

2



SMARTSCAPE

Design

3

Figure Out What You Want

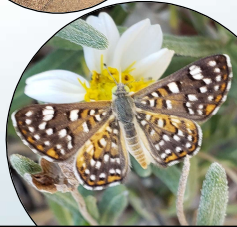
Create a vision (internal to the HOA) that the HOA will use to write their Request for Proposal (RFP) and select a designer.

- **The HOA gathers information about their community needs/wants.**
 - Survey the community
 - Take notes, take pictures
 - Remember, the goal is to reduce water use and create a landscape that reflects your values and priorities

4

Sample questions to ask:

- How do you use/want to use your neighborhood landscape?
- What amenities do you value?
 - Shade
 - Wildlife
 - Quiet
 - Recreation
 - Dog walking
 - Exercise
 - Gatherings/Entertainment



5

A Smartscape *makes sense...*

- It is designed to accommodate local environmental conditions
- It requires minimal maintenance
- It uses resources wisely
- It looks good, feels good, & raises property values!



6

Designing Your Desert Landscape



- Look for inspiration
- Think about function and maintenance
- Think about your garden space
- Consider the water!!!
- *Ensure that Smartscape Principles are followed*

7

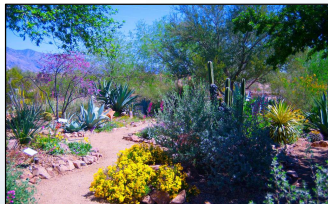
Principles – Smartscape Professionals Should Know and Practice:

- **PLANNING & DESIGN:** have a plan, consider site constraints, climate, and conditions; right plant – right place
- **SOIL:** drainage, earthworks
- **TURF:** minimize, find alternatives
- **PLANTS:** native and/or drought-tolerant, properly planted
- **IRRIGATION:** efficient and conservative; water harvesting
- **MULCH:** retain soil moisture, add nutrients
- **MAINTENANCE:** limited water, fertilizers, and pesticides; prune only as needed.

8

Inspiration For Your Desert Landscape

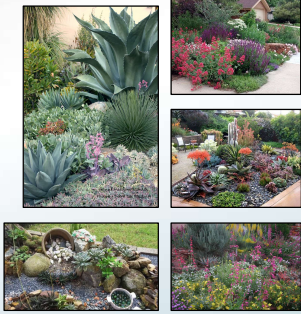
- Neighbors' gardens
- Tucson Botanical Gardens
- Arizona-Sonora Desert Museum demonstration gardens
- Pima County Master Gardeners demonstration gardens
- Tohono Chul
- Nature!



9

Xeriscape:

- Doesn't mean NO water!
- Water harvesting: active and/or passive
- No shortage of color and texture
- Be creative with inert materials
- It's OK for plants to die back for winter
- No invasives



10

Desert Garden Space Design



- Sunlight and Shade
- Wind
- Topography
- Microclimates
- Soil

11

Design for Desert Watering

Plant the water first!

- What are your options?
 - Irrigation
 - [Landscape Resources City of Tucson](#)
 - Rainwater Harvesting & Grey Water Systems:
 - [Residential Customer Rebates City of Tucson](#)
 - Reclaimed water
 - [Reclaimed Water City of Tucson](#)



12

Water Harvesting



Landscape
Contours

13

Selecting a short list of Designers to share your RFP with

- <https://smartscape.org>
- Word of mouth
- Look at websites
- Look at past work

14

Designer Selection Interviews: What to expect

- Designer should communicate with your HOA to confirm your vision, values, and priorities.
 - *Understanding that the project goal is to reduce water use*
- Using results from your Community Survey, discuss:
 - **What is your HOA's design aesthetic?**
 - **What is the design for?** Streetscapes, Common Area, Boundary?
 - **Who will be using that space?** Pedestrians, Dogs, Vehicles?
 - **What will the space be used for?** Walking, Events, View, etc.?

15

161

Design Process –
Once you have selected your Designer

1. Client interview

2. Site Analysis

3. Landscape Vision

4. Preliminary Design

5. Revisions

6. Revised Design

7. Cost Estimates

8. Revisions

9. Final Design Plan, Final Cost Estimate

16




Design considerations:

For **General Design**, use a ***Landscape Designer**

For significant **Grading or Drainage** modifications that affect offsite runoff or structures, and/or for **Utilities Interface**, a ****Landscape Architect** is recommended

17

Sustainable Design



Design suggestions that a Qualified Designer *could* incorporate:

• Water harvesting: active/passive

• Native plantings

• Pathways

• Materials allowing for water percolation: Permeable pavers, decomposed granite, mulch

• Creating habitats for wildlife-especially pollinator gardens

• Composting

• Designing for sun exposure and shade

• Supply - Solar, Power, Water

• Borders/Boundaries/Views

• Urban gardening

18

KH1 Delete Design Elements, Principles, etc. 4 slides.
Karen L Hanshaw, 2024-11-13T16:44:21.963

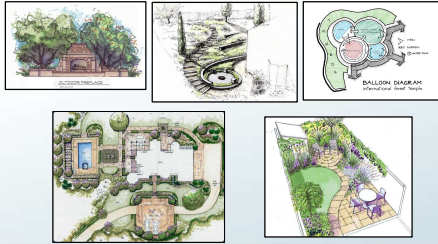
Connect Design to Use and Function



19

Conceptual Design: "What could be"

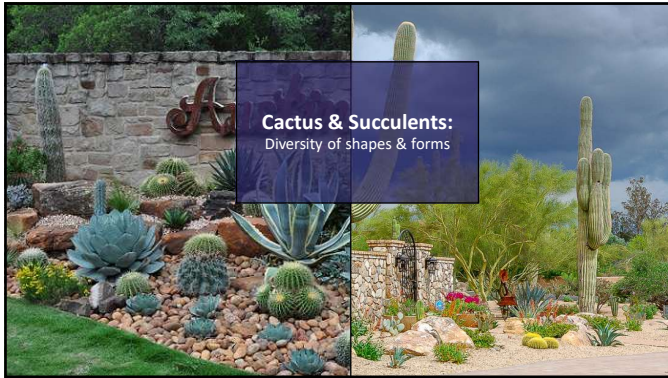
- Ideas of placement and elements
- General layout
- Detailed but not specific
- Create a vision board?
- Can be done with just imagery
- Sketches
- Try out various options
- **Builder/Installer can use to implement project**



20



21



22



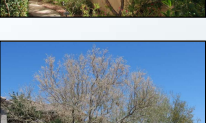

23


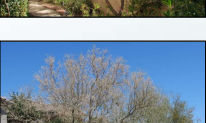


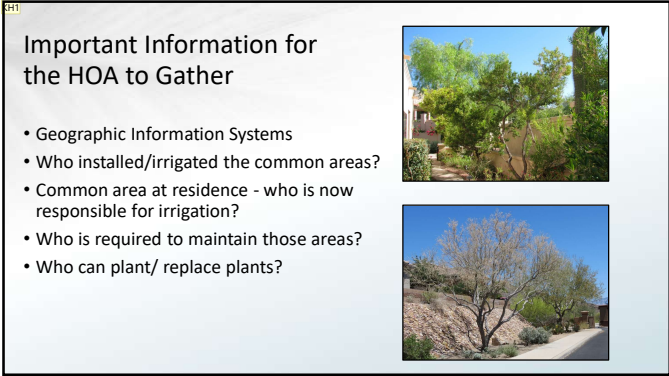
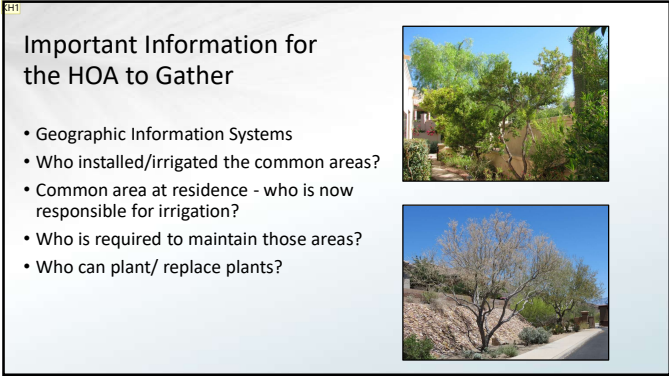
24

Important Information for the HOA to Gather

- Geographic Information Systems
- Who installed/irrigated the common areas?
- Common area at residence - who is now responsible for irrigation?
- Who is required to maintain those areas?
- Who can plant/ replace plants?

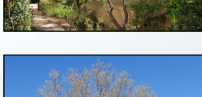



- # Important Information for the HOA to Gather
- Geographic Information Systems
 - Who installed/irrigated the common areas?
 - Common area at residence - who is now responsible for irrigation?
 - Who is required to maintain those areas?
 - Who can plant/ replace plants?
- 
- 



Important Information for the HOA to Gather

- Geographic Information Systems
- Who installed/irrigated the common areas?
- Common area at residence - who is now responsible for irrigation?
- Who is required to maintain those areas?
- Who can plant/ replace plants?

[illegible]

Design Tips: Irrigation Lines

- Irrigation should be on a dedicated meter
- Consider water pressure and power source
- Separate valves for different watering needs

- ## Design Tips: Irrigation Lines
- Irrigation should be on a dedicated meter
 - Consider water pressure and power source
 - Separate valves for different watering needs

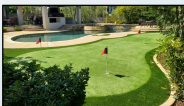
Design Tips: Irrigation Lines


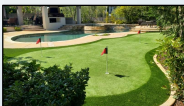
- Irrigation should be on a dedicated meter
- Consider water pressure and power source
- Separate valves for different watering needs

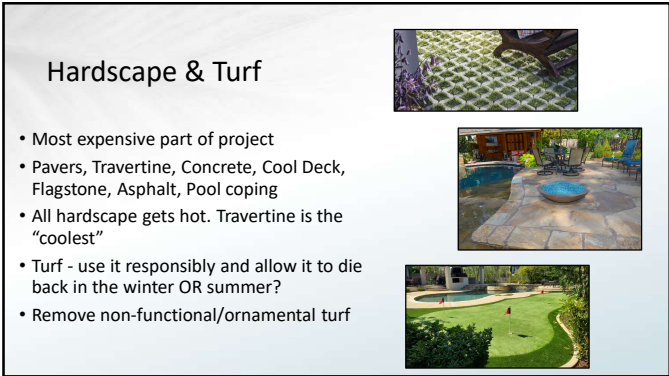
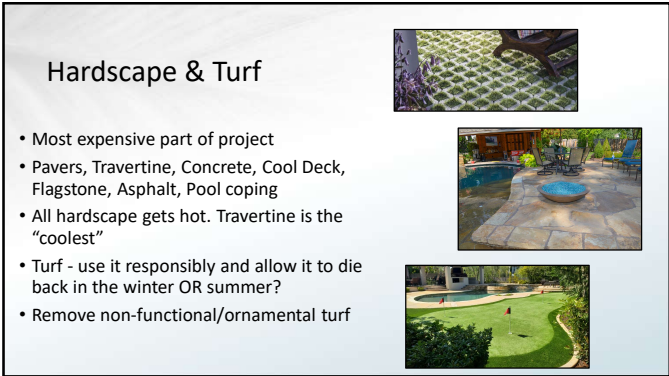
[illegible]

Hardscape & Turf

- Most expensive part of project
- Pavers, Travertine, Concrete, Cool Deck, Flagstone, Asphalt, Pool coping
- All hardscape gets hot. Travertine is the “coolest”
- Turf - use it responsibly and allow it to die back in the winter OR summer?
- Remove non-functional/ornamental turf



- ## Hardscape & Turf
- Most expensive part of project
 - Pavers, Travertine, Concrete, Cool Deck, Flagstone, Asphalt, Pool coping
 - All hardscape gets hot. Travertine is the “coolest”
 - Turf - use it responsibly and allow it to die back in the winter OR summer?
 - Remove non-functional/ornamental turf
- 
- 
- 



Hardscape & Turf

- Most expensive part of project
- Pavers, Travertine, Concrete, Cool Deck, Flagstone, Asphalt, Pool coping
- All hardscape gets hot. Travertine is the “coolest”
- Turf - use it responsibly and allow it to die back in the winter OR summer?
- Remove non-functional/ornamental turf



KH1 Put where?

Karen L Hanshaw, 2024-11-14T21:36:54.103



THANK YOU!

Facebook @pimasmartscape
Instagram @pimasmartscape
X (Formerly twitter) @pimasmartscape

<https://www.pimasmartscape.arizona.edu>
<https://www.smartscape.org>



UNIVERSITY OF ARIZONA
Cooperative Extension

28

ACKNOWLEDGEMENTS

Content Developed/modified by:

Marcus White, Micaela Machado, Greg Starr,
Carianne Funicelli, Dominika Heusinkveld, Jessie
Byrd, & Juan Barba

29
